

PROPOSED SUBDIVISION
OF PROPERTY
SITUATE
WEST HAMPTON DUNES
TOWN OF SOUTHAMPTON
SUFFOLK COUNTY, NEW YORK
S.C. TAX No. 907-03-01-07,08
SCALE 1" = 50'

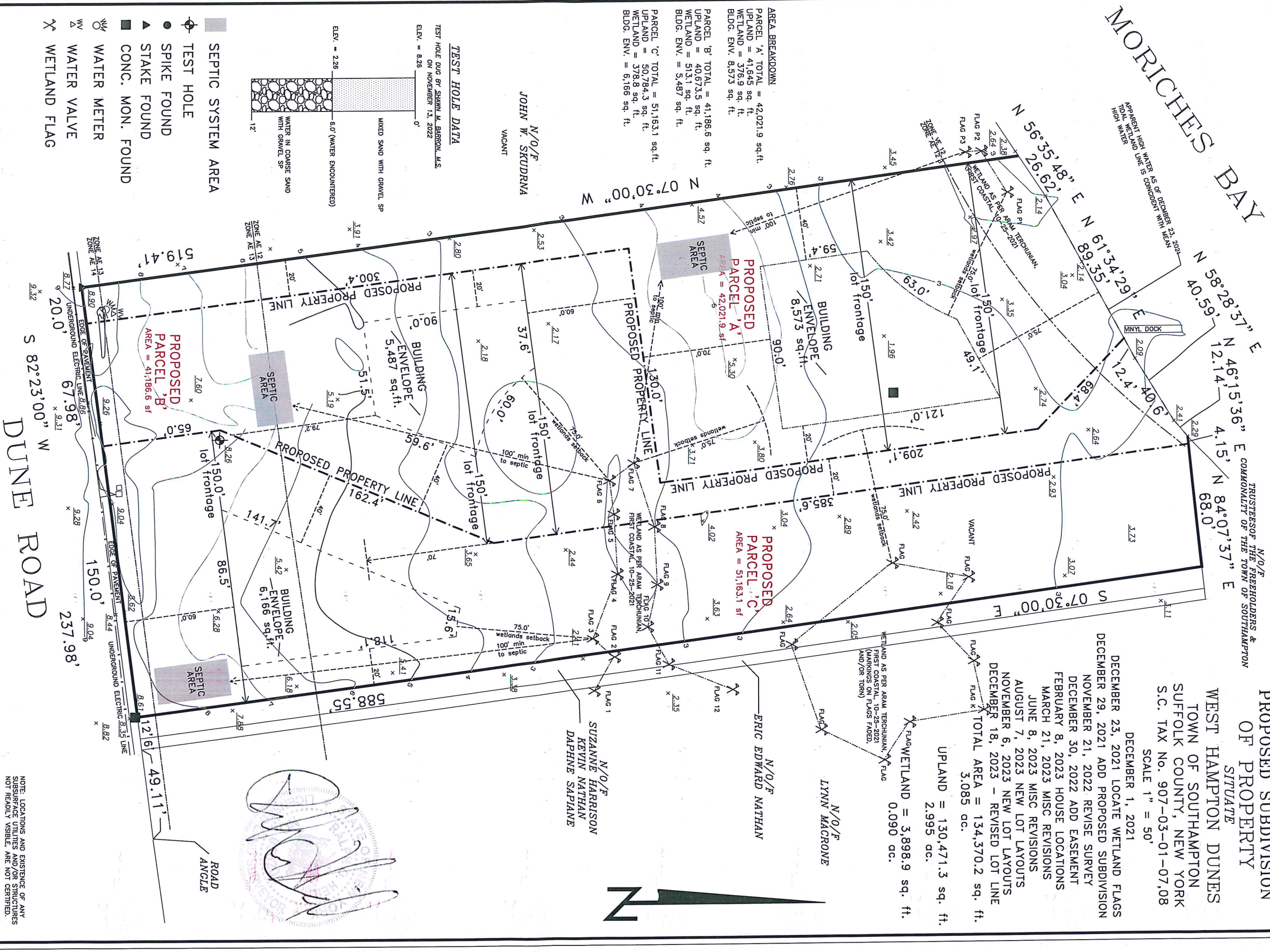
DECEMBER 1, 2021
DECEMBER 23, 2021 LOCATE WETLAND FLAGS
DECEMBER 29, 2021 ADD PROPOSED SUBDIVISION
NOVEMBER 21, 2022 REVISE SURVEY
DECEMBER 30, 2022 ADD EASEMENT
FEBRUARY 8, 2023 HOUSE LOCATIONS
MARCH 21, 2023 MISC REVISIONS
JUNE 8, 2023 MISC REVISIONS
AUGUST 7, 2023 NEW LOT LAYOUTS
NOVEMBER 6, 2023 NEW LOT LAYOUTS
DECEMBER 18, 2023 - REVISED LOT LINE

TOTAL AREA = 134,370.2 sq. ft.
3.085 ac.

UPLAND = 130,471.3 sq. ft.
2.995 ac.

WETLAND = 3,898.9 sq. ft.
0.090 ac.

MORICHES BAY



AREA BREAKDOWN
PARCEL 'A' TOTAL = 42,021.9 sq. ft.
UPLAND = 41,645 sq. ft.
WETLAND = 376.9 sq. ft.
BLDG. ENV. = 8,573 sq. ft.
PARCEL 'B' TOTAL = 41,186.6 sq. ft.
UPLAND = 40,673.5 sq. ft.
WETLAND = 513.1 sq. ft.
BLDG. ENV. = 5,487 sq. ft.
PARCEL 'C' TOTAL = 51,163.1 sq. ft.
UPLAND = 50,784.3 sq. ft.
WETLAND = 378.8 sq. ft.
BLDG. ENV. = 6,166 sq. ft.

TEST HOLE DATA
TEST HOLE DUG BY SAMMY M. BARROU, M.S.
ON NOVEMBER 13, 2022
ELEV. = 8.26
0'
MIXED SAND WITH GRAVEL SP
WATER IN COARSE SAND
WITH GRAVEL SP
ELEV. = 2.26
6.0' (WATER ENCOUNTERED)

- SEPTIC SYSTEM AREA
- TEST HOLE
- SPIKE FOUND
- STAKE FOUND
- CONC. MON. FOUND
- WATER METER
- WATER VALVE
- WETLAND FLAG

NOTES:

- ELEVATIONS ARE REFERENCED TO N.A.V.D. 1988 DATUM
EXISTING ELEVATIONS ARE SHOWN THUS: 00.00
- FLOOD ZONE INFORMATION TAKEN FROM:
FLOOD INSURANCE RATE MAP No. 36103C0764 H
ZONE AE: BASE FLOOD ELEVATIONS DETERMINED
ELEVATION = 12.13¹⁴
ZONE VE: FLOOD HAZARD WITH VELOCITY WAVE ACTION
ELEVATION = 12
- EXISTING HOUSE, DECKS, WALKS TO BE REMOVED FROM PARCEL A.
EXISTING SEPTIC SYSTEM TO BE PUMPED CLEAN AND FILLED ACCORDING
TO THE STANDARDS SET FORTH BY S.C.D.H.S.
- ZONING R-40 (section 560-21(1))
FRONT YARD = 60'

METES AND BOUNDS SURVEYING

53 PROBST DRIVE
SHIRLEY, NY 11967
PHONE (516) 972-5812
surveydude@optonline.net

LOTS: 07,08 BLOCK: 01 SECTION: 03 DISTRICT: 907
MAP OF:

SITUATED AT: WEST HAMPTON DUNES
TOWN OF SOUTHAMPTON, SUFFOLK CO., N.Y.

CERTIFIED

NOTE: LOCATIONS AND EXISTENCE OF ANY
SUBSURFACE UTILITIES AND/OR STRUCTURES
NOT READILY VISIBLE, ARE NOT CERTIFIED.
THE SURVEY IS SUBJECT TO ANY RESIDENT
OF RECORD AND ANY OTHER PERMISSIBLE FACTS
WHICH A TITLE SEARCH MIGHT DISCLOSE.
"UNREGISTERED ATTENTION OR AVOIDANCE TO A
SURVEY MAP BEARING A LICENSED LAND SURVEYOR'S
SEAL IS A VIOLATION OF ARTICLE 134, SECTION
2200, SUBDIVISION 2, OF THE NEW YORK STATE
ECONOMIC DEVELOPMENT LAW."
Copies from the original of this survey map
not marked with an original of the land
surveyor's seal shall not be considered a valid true copy.
Certification indicated herein signify that
this survey was prepared in accordance with
the existing Code of Practice for Land Surveyors
published by the New York State Association of
Professional Land Surveyors, Inc. (NYSALSI), and
certifications shall run only to the person
for whom the survey is prepared, and on his
behalf to the title company, governmental
agency and lending institution.
Certifications are not transferable to
additional institutions or subsequent owners."

JOB NO.: 21-494B
DATE: NOVEMBER 17, 2022

PROPOSED SUBDIVISION
OF PROPERTY
SITUATE

WEST HAMPTON DUNES
TOWN OF SOUTHAMPTON
SUFFOLK COUNTY, NEW YORK
S.C. TAX No. 907-03-01-07,08
SCALE 1" = 50'

DECEMBER 1, 2021

DECEMBER 23, 2021 LOCATE WETLAND FLAGS
DECEMBER 29, 2021 ADD PROPOSED SUBDIVISION

NOVEMBER 21, 2022 REVISE SURVEY

DECEMBER 30, 2022 ADD EASEMENT

FEBRUARY 8, 2023 HOUSE LOCATIONS

MARCH 21, 2023 MISC REVISIONS

JUNE 8, 2023 MISC REVISIONS

AUGUST 7, 2023 NEW LOT LAYOUTS

NOVEMBER 6, 2023 NEW LOT LAYOUTS

DECEMBER 18, 2023 - REVISED LOT LINE

TOTAL AREA = 134,370.2 sq. ft.

3.085 ac.

UPLAND = 130,471.3 sq. ft.

2.995 ac.

WETLAND = 3,898.9 sq. ft.

0.090 ac.

TRUSTEES OF THE FREEHOLDERS &
COMMONALTY OF THE TOWN OF SOUTHAMPTON

N 46°15'36" E 4.15' N 84°07'37" E 68.0'

N 58°28'37" E 12.14' N 40°56'12" E 4.15'

N 56°35'48" E 58°28'37" E 12.14' N 40°56'12" E 4.15'

N 56°35'48" E 58°28'37" E 12.14' N 40°56'12" E 4.15'

N 56°35'48" E 58°28'37" E 12.14' N 40°56'12" E 4.15'

N 56°35'48" E 58°28'37" E 12.14' N 40°56'12" E 4.15'

N 56°35'48" E 58°28'37" E 12.14' N 40°56'12" E 4.15'

N 56°35'48" E 58°28'37" E 12.14' N 40°56'12" E 4.15'

N 56°35'48" E 58°28'37" E 12.14' N 40°56'12" E 4.15'

N 56°35'48" E 58°28'37" E 12.14' N 40°56'12" E 4.15'

N 56°35'48" E 58°28'37" E 12.14' N 40°56'12" E 4.15'

N 56°35'48" E 58°28'37" E 12.14' N 40°56'12" E 4.15'

N 56°35'48" E 58°28'37" E 12.14' N 40°56'12" E 4.15'

N 56°35'48" E 58°28'37" E 12.14' N 40°56'12" E 4.15'

N 56°35'48" E 58°28'37" E 12.14' N 40°56'12" E 4.15'

N 56°35'48" E 58°28'37" E 12.14' N 40°56'12" E 4.15'

N 56°35'48" E 58°28'37" E 12.14' N 40°56'12" E 4.15'

N 56°35'48" E 58°28'37" E 12.14' N 40°56'12" E 4.15'

N 56°35'48" E 58°28'37" E 12.14' N 40°56'12" E 4.15'

N 56°35'48" E 58°28'37" E 12.14' N 40°56'12" E 4.15'

N 56°35'48" E 58°28'37" E 12.14' N 40°56'12" E 4.15'

N 56°35'48" E 58°28'37" E 12.14' N 40°56'12" E 4.15'

N 56°35'48" E 58°28'37" E 12.14' N 40°56'12" E 4.15'

N 56°35'48" E 58°28'37" E 12.14' N 40°56'12" E 4.15'

N 56°35'48" E 58°28'37" E 12.14' N 40°56'12" E 4.15'

N 56°35'48" E 58°28'37" E 12.14' N 40°56'12" E 4.15'

N 56°35'48" E 58°28'37" E 12.14' N 40°56'12" E 4.15'

N 56°35'48" E 58°28'37" E 12.14' N 40°56'12" E 4.15'

N 56°35'48" E 58°28'37" E 12.14' N 40°56'12" E 4.15'

N 56°35'48" E 58°28'37" E 12.14' N 40°56'12" E 4.15'

N 56°35'48" E 58°28'37" E 12.14' N 40°56'12" E 4.15'

N 56°35'48" E 58°28'37" E 12.14' N 40°56'12" E 4.15'

N 56°35'48" E 58°28'37" E 12.14' N 40°56'12" E 4.15'

N 56°35'48" E 58°28'37" E 12.14' N 40°56'12" E 4.15'

N 56°35'48" E 58°28'37" E 12.14' N 40°56'12" E 4.15'

N 56°35'48" E 58°28'37" E 12.14' N 40°56'12" E 4.15'

N 56°35'48" E 58°28'37" E 12.14' N 40°56'12" E 4.15'

N 56°35'48" E 58°28'37" E 12.14' N 40°56'12" E 4.15'

N 56°35'48" E 58°28'37" E 12.14' N 40°56'12" E 4.15'

N 56°35'48" E 58°28'37" E 12.14' N 40°56'12" E 4.15'

N 56°35'48" E 58°28'37" E 12.14' N 40°56'12" E 4.15'

N 56°35'48" E 58°28'37" E 12.14' N 40°56'12" E 4.15'

N 56°35'48" E 58°28'37" E 12.14' N 40°56'12" E 4.15'

N 56°35'48" E 58°28'37" E 12.14' N 40°56'12" E 4.15'

N 56°35'48" E 58°28'37" E 12.14' N 40°56'12" E 4.15'

N 56°35'48" E 58°28'37" E 12.14' N 40°56'12" E 4.15'

N 56°35'48" E 58°28'37" E 12.14' N 40°56'12" E 4.15'

N 56°35'48" E 58°28'37" E 12.14' N 40°56'12" E 4.15'

N 56°35'48" E 58°28'37" E 12.14' N 40°56'12" E 4.15'

N 56°35'48" E 58°28'37" E 12.14' N 40°56'12" E 4.15'

N 56°35'48" E 58°28'37" E 12.14' N 40°56'12" E 4.15'

N 56°35'48" E 58°28'37" E 12.14' N 40°56'12" E 4.15'

N 56°35'48" E 58°28'37" E 12.14' N 40°56'12" E 4.15'

N 56°35'48" E 58°28'37" E 12.14' N 40°56'12" E 4.15'

N 56°35'48" E 58°28'37" E 12.14' N 40°56'12" E 4.15'

N 56°35'48" E 58°28'37" E 12.14' N 40°56'12" E 4.15'

N 56°35'48" E 58°28'37" E 12.14' N 40°56'12" E 4.15'

N 56°35'48" E 58°28'37" E 12.14' N 40°56'12" E 4.15'

N 56°35'48" E 58°28'37" E 12.14' N 40°56'12" E 4.15'

N 56°35'48" E 58°28'37" E 12.14' N 40°56'12" E 4.15'

N 56°35'48" E 58°28'37" E 12.14' N 40°56'12" E 4.15'

N 56°35'48" E 58°28'37" E 12.14' N 40°56'12" E 4.15'

N 56°35'48" E 58°28'37" E 12.14' N 40°56'12" E 4.15'

N 56°35'48" E 58°28'37" E 12.14' N 40°56'12" E 4.15'

N 56°35'48" E 58°28'37" E 12.14' N 40°56'12" E 4.15'

N 56°35'48" E 58°28'37" E 12.14' N 40°56'12" E 4.15'

N 56°35'48" E 58°28'37" E 12.14' N 40°56'12" E 4.15'

N 56°35'48" E 58°28'37" E 12.14' N 40°56'12" E 4.15'

N 56°35'48" E 58°28'37" E 12.14' N 40°56'12" E 4.15'

N 56°35'48" E 58°28'37" E 12.14' N 40°56'12" E 4.15'

N 56°35'48" E 58°28'37" E 12.14' N 40°56'12" E 4.15'

N 56°35'48" E 58°28'37" E 12.14' N 40°56'12" E 4.15'

N 56°35'48" E 58°28'37" E 12.14' N 40°56'12" E 4.15'

N 56°35'48" E 58°28'37" E 12.14' N 40°56'12" E 4.15'

N 56°35'48" E 58°28'37" E 12.14' N 40°56'12" E 4.15'

N 56°35'48" E 58°28'37" E 12.14' N 40°56'12" E 4.15'

N 56°35'48" E 58°28'37" E 12.14' N 40°56'12" E 4.15'

N 56°35'48" E 58°28'37" E 12.14' N 40°56'12" E 4.15'

N 56°35'48" E 58°28'37" E 12.14' N 40°56'12" E 4.15'

N 56°35'48" E 58°28'37" E 12.14' N 40°56'12" E 4.15'

N 56°35'48" E 58°28'37" E 12.14' N 40°56'12" E 4.15'

N 56°35'48" E 58°28'37" E 12.14' N 40°56'12" E 4.15'

N 56°35'48" E 58°28'37" E 12.14' N 40°56'12" E 4.15'

N 56°35'48" E 58°28'37" E 12.14' N 40°56'12" E 4.15'

N 56°35'48" E 58°28'37" E 12.14' N 40°56'12" E 4.15'

N 56°35'48" E 58°28'37" E 12.14' N 40°56'12" E 4.15'

N 56°35'48" E 58°28'37" E 12.14' N 40°56'12" E 4.15'

N 56°35'48" E 58°28'37" E 12.14' N 40°56'12" E 4.15'

N 56°35'48" E 58°28'37" E 12.14' N 40°56'12" E 4.15'

N 56°35'48" E 58°28'37" E 12.14' N 40°56'12" E 4.15'

N 56°35'48" E 58°28'37" E 12.14' N 40°56'12" E 4.15'

N 56°35'48" E 58°28'37" E 12.14' N 40°56'12" E 4.15'

N 56°35'48" E 58°28'37" E 12.14' N 40°56'12" E 4.15'

N 56°35'48" E 58°28'37" E 12.14' N 40°56'12" E 4.15'

METES AND BOUNDS SURVEYING

53 PROBST DRIVE
SHIRLEY, NY 11967
PHONE (516) 972-5812
surveydude@optonline.net

LOTS: 07,08 BLOCK: 01 SECTION: 03 DISTRICT: 907

MAP OF:
SITUATED AT: WEST HAMPTON DUNES
TOWN OF SOUTHAMPTON, SUFFOLK CO., N.Y.

CERTIFIED

JOB NO.: 21-494B

DATE: NOVEMBER 17, 2022

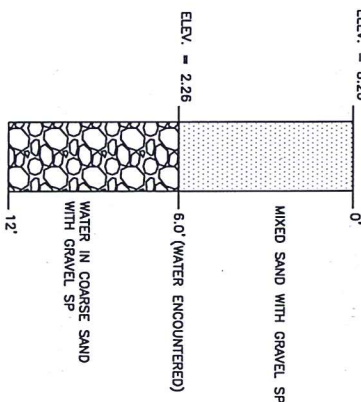
NOTE: LOCATIONS AND EXISTENCE OF ANY
SUBSURFACE UTILITIES AND/OR STRUCTURES
NOT READILY VISIBLE, ARE NOT CERTIFIED.

"THIS SURVEY IS SUBJECT TO ANY EASEMENT
OF RECORD AND ANY OTHER PERMIT FACTS
WHICH A TITLE SEARCH MIGHT DISCLOSE."
"UNAUTHORIZED ALTERATION OR ADDITION TO A
SURVEY MAP BEARING A LICENSED LAND SURVEYOR'S
SEAL OR SIGNATURE IS A VIOLATION OF THE
EDUCATION LAW."
"Copies from the original of this survey map
not modified with an original of the land
surveyor's linked seal or his embossed seal
shall not be considered a valid true copy."
"Certification indicated hereon signify that
this survey was prepared in accordance with
the standards and practices of the New York State
Professional Land Surveyors. Said
certifications shall run only to the person
for whom the title company is prepared, and on his
behalf to the title company, governmental
agencies and other interested parties. Said
certifications are not transferrable to
additional institutions or subsequent owners."

- SEPTIC SYSTEM AREA
- TEST HOLE
- SPIKE FOUND
- STAKE FOUND
- CONC. MON. FOUND
- WATER METER
- WATER VALVE
- WETLAND FLAG

TEST HOLE DATA

TEST HOLE DUG BY SHAWN M. BARRON, M.S.
ON NOVEMBER 13, 2022
ELEV. = 8.28



N/O/F
JOHN W. SKUDRINA
VACANT

AREA BREAKDOWN
PARCEL 'A' TOTAL = 42,021.9 sq. ft.
UPLAND = 41,645 sq. ft.
WETLAND = 376.9 sq. ft.
BLDG. ENV. = 8,573 sq. ft.
PARCEL 'B' TOTAL = 41,186.6 sq. ft.
UPLAND = 40,673.5 sq. ft.
WETLAND = 513.1 sq. ft.
BLDG. ENV. = 3,487 sq. ft.
PARCEL 'C' TOTAL = 51,163.1 sq. ft.
UPLAND = 50,784.3 sq. ft.
WETLAND = 378.8 sq. ft.
BLDG. ENV. = 6,166 sq. ft.

DUNE ROAD
S 82°23'00" W
237.98'

